

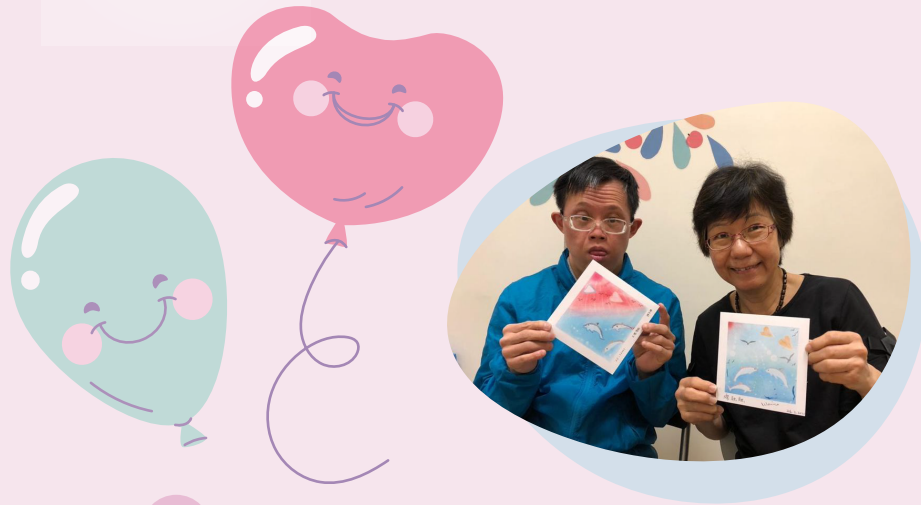


基督教家庭服務中心

Christian Family Service Centre

Cheerful Place

District Support Centre (Kwun Tong East)



Contact Us

Address : 8/F., Kai Nang Integrated Rehabilitation Services Complex,
4 Fuk Tong Road, Kwun Tong, Kowloon

Tel : 2191 3138

Fax : 2304 4029

Email : cheerfulplace@cfsc.org.hk

Opening Hours : 9:00am -6:00pm (Monday to Saturday)
(Closed on Sunday and Public holidays)

Url : <https://www.cfsc.org.hk/dsc/>



Publisher : Mr. Cheung Ka Wai

Count : 200

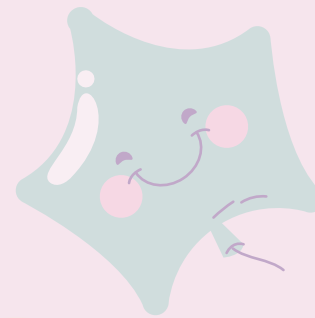
Date of Printing : January 2023





Service Introduction:

Cheerful place is one of the District Support Centers for Persons with Disabilities, by adopting a district-based approach, provides one-stop community support services for PWDs and their family members/carers.



District of Service:

Kwun Tong East

Included : Tsui Ping, Po Tat, Sau Mau Ping, Lam Tin, Yau Tong, Lei Yu Mun etc.

Service Contents:

1. Individual or group training programmes and community support services
2. Social, recreational and personal development programmes
3. Case management services
4. Centred-based Care and Support service
5. Home-based care and Support Service (Escort Service included)
6. Day care service for persons with severe disabilities
7. Supportive services to family members/carers
8. Allied health professionals services
(included physiotherapy, occupational therapy, speech therapy)
9. Clinical psychology services
10. To liaise community resources and provide referral services for appropriate welfare services
11. Drop-in service



Target Group:

- Persons with disabilities (PWDs) living in the community;
- Family members/carers of persons with disabilities (PWDs);
- Community at large

Application Procedures:

Contact us for services directly or referred by social workers

Fees and Charges:

Membership	\$21 (per year)
Centred-based Care and Support service	\$5 (per hour)
Home-based care and Support Service	\$33 (per hour)
Day care service for persons with severe disabilities (including lunch fee)	\$61 (per day) /\$1002 (per month)
Transport fee	\$10 (per trip)
Activity / group / workshop	According to individual programme fee

Applicants are required to become member before using our service.
 * We provide financial subsidy to special needs service users, please contact our social workers for details.

Remark: An additional lunch fee is charged for Centred-based Care and Support service if it is required by the service users.

Withdraw From the Service:

- Self-withdraw
- Not eligible to use the service
- Membership expires